



Installation Guide



Installation Guide
Pull Style Return Tarpaulin System

Exploded Views

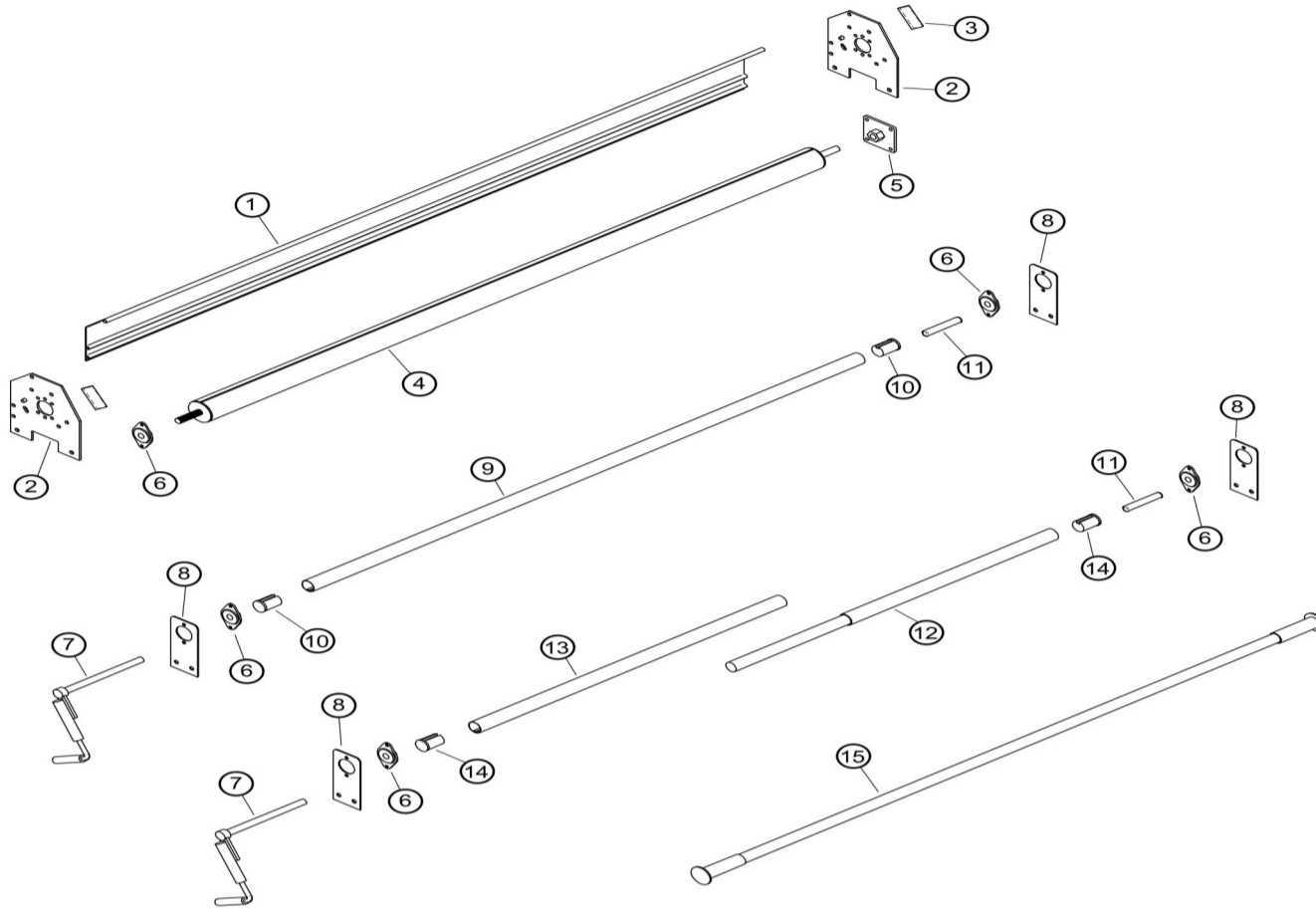
Installation Instructions

Mounting

System Parts List



Pull Style Spring Return Installation Instructions



- Covers up to 26' with standard tarps and 20' with flaps
- Aluminum extruded 3" roller bar. Retro-fit kits available to replace competitors roller bars
- Machined aluminum end caps and the heaviest spring for the application in the industry
- Comes assembled, tarp mounted, and spring pre-loaded to save hours in installation
- Heavy Duty Spring Return Systems for trailers up to 40' are available upon request

Tools Required

- | | |
|-----------------------|--------------|
| 3/8" Drive Ratchet | Tape Measure |
| 1/4" Socket & Wrench | Screw Driver |
| 5/16" Socket & Wrench | |
| 1/2" Socket & Wrench | |
| 3/4" Socket & Wrench | |

Pull Bar & Accessories Parts List

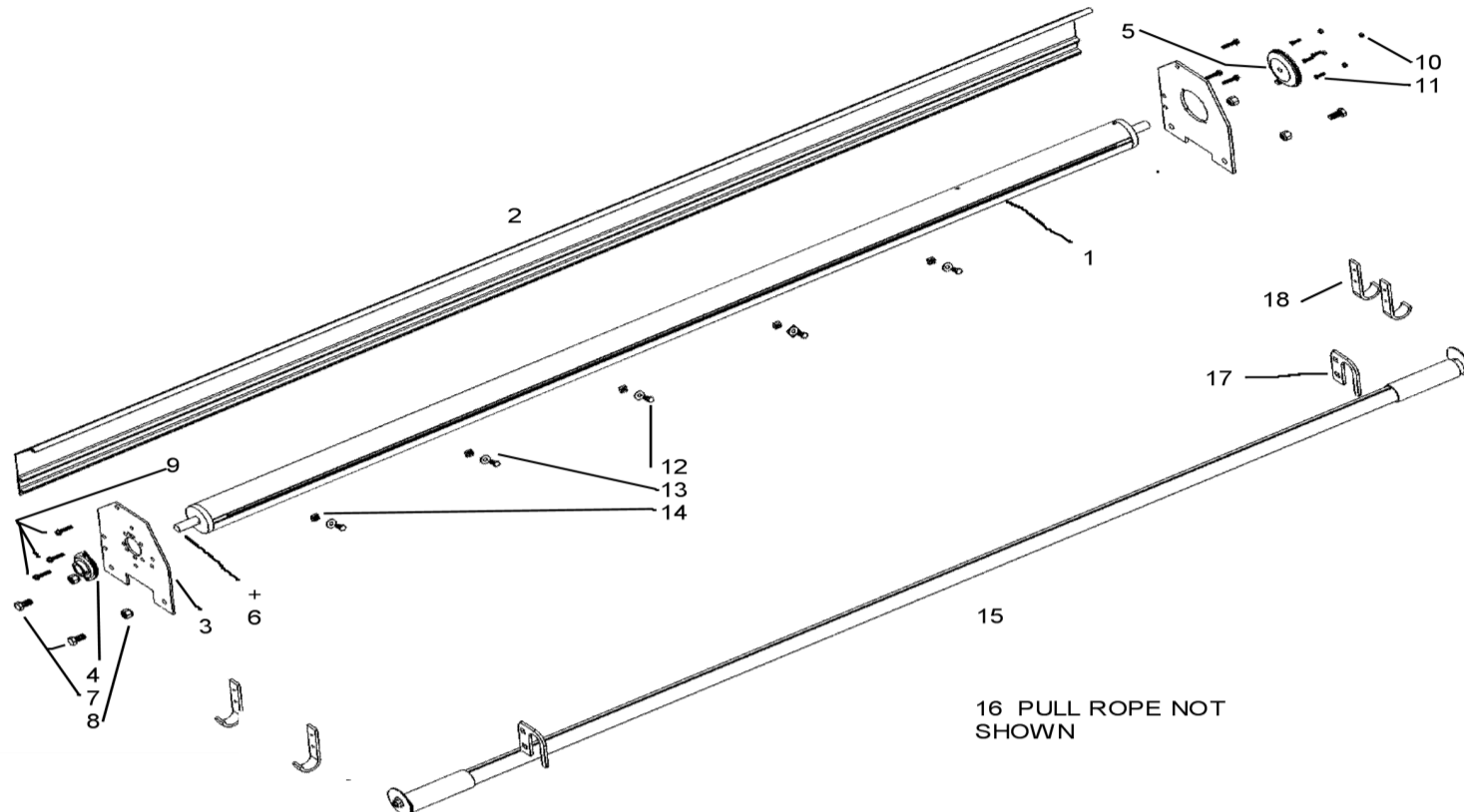
QTY.	Part Number #	Description
2	11247	1.5 x 25mm Hex Bolt
1	13919	3/4-10 Plain Hex Jam Nut
4	13926	1/4-20 x 1/2 Button Head Socket Cap Screw
6	11204	5/16-18x1-1/4 Zinc Indent Hx Wash Slot T-23
1	11380	Wind Deflector 97"
5	14026	1/4" x 1" Zinc Plated Fender Washer
5	11362	1/4" Nylock Nut
5	13922	1/4-20 x 3/4" Zinc Plated Carriage Bolt
4	11270	1/2"-13 x 1" Grade 5 Hex Cap Screw
4	11271	1/2"-12 Nylock Nut
8	13763	#12 x 1" Self Drilling Screw
1	11300	112 x 10-1/2 x 10-1/2 Tri Wall Box
2	11203	5/16-18 x 3/4" Low Carbon Hex Bolt
2	11229	5/16" Nylock Nut
4	14037	1/2"-13 X 1-1/2" Grade 5 Zinc Carriage Bolt
4	11271	1/2"-13 Nylock Nut
4	14036	1/2" Zinc Plated SAE Flat Washer

System Includes

QTY.	Part Number #	Description
1	13906	Torsion Spring 84" wide Housing
1	13908	Pullstyle Drive Assembly
1	13923	Pullstyle Stationary Assembly
1	13673	105" Auto System Tarp Axle
1	14151	Steel Adapter Plate for Steel Return
1	13929	Plastic Pipe 2"
2	11295	Aluminum Tarp Spool Side Plate w/Bumper
1	11139	Axle Bearing
1	13467	Aluminum Rear Pullbar 103"
1	14988	25' 1/2" Truck Rope Black/Orange
2	12283	Steel Tail Gate Latch
4	12282	J-Hook
2	13771	Rear Pull Bar Plastic Handle
2	14412	Tarp Guide for Pull Bar



Pull Style Spring Return Installation Instructions



MOUNTING THE TARP SPOOL MOUNTING BRACKETS

Mount the **TARP SPOOL MOUNTING BRACKET (#3R)** with the **RATCHET ASSEMBLY (#3)** as far forward as possible on the **Passenger side** of the dump box. Use the supplied 1/2" x 1" bolts and drill the two mounting bracket holes 1-3/4" down from the top edge of the box. The **RUBBER BUMPER** should face towards the rear of the truck.

Mount the other **TARP SPOOL MOUNTING BRACKET (#3L)** with the **AXLE BEARING (#4)** as far forward as possible on the **Driver side** of the dump box. Use the supplied 1/2" x 1" bolts and drill the two mounting bracket holes 1-3/4" down from the top edge of the box. The **RUBBER BUMPER** should face towards the rear of the truck.

Mounting of the Housing

Using a tape measure you can measure out the holes and location of holes on the housing and then mark on the truck bed using a black marker wax pencil. Or you could make a template with hole location on them by laying a piece of cardboard on the ground tracing around the edge of the housing and then turning over and placing the holes in the proper location.

INSTALLING THE TARP AND ROLLER ASSEMBLY

Measure the distance between the two **TARP SPOOL MOUNTING BRACKETS (#3)**. The **SPRING RETURN ROLLER ASSEMBLY (#1)** should be approximately 2-inches shorter than this dimension. If the Roller Assembly (#1) is too long, remove the **ALUMINUM END CAP** from the end of the Roller Assembly with the non-threaded shaft and cut the Roller Assembly to the correct length using a standard radial saw. Replace **ALUMINUM END CAP** the in to the Roller Assembly.

INSTALLING THE WIND DEFLECTOR

1) Install the optional **WIND DEFLECTOR (#2)** by first verify that the length is correct to fit between the two **TARP SPOOL MOUNTING BRACKETS (#3)**. If the **WIND DEFLECTOR (#1)** is too long, cut it to the correct length using a standard radial saw.

2) Attach the **WIND DEFLECTOR (#2)** to the **TARP SPOOL MOUNTING BRACKETS (#2)** using the six supplied 5/16-18x1-1/4 SlotT-23 Thread Cutting Screw

Replace **ALUMINUM END CAP** the in to the Roller Assembly. Install the **TARP** into the **SPRING RETURN ROLLER ASSEMBLY** by sliding the 5/16" square nuts into the slot and then screwing the 5/16" bolts with washers (#12-13-14) through the grommets in the tarp. Slide the Non-Threaded Shaft (#6) into the **AXLE BEARING (#4)** on the **Driver side** of the dump box. Remove the shipping nut from the Threaded Shaft of the **ROLLER ASSEMBLY** and install this shaft into the **RATCHET ASSEMBLY (#5)** on the **Passenger side** of the dump box. Use a wrench to turn the **RATCHET ASSEMBLY (#5)** a couple turns to secure the Threaded Shaft to the **RATCHET ASSEMBLY (#5)**.

MOUNTING THE PULL BAR AND TAILGATE LATCHES

Slide the Rear Pull Bar into the **SPLINE on the rear of the tarp**. Using The **#3 Grommets in the center section of the TARP** Tie The Rope Thru The Grommet And Around The Rear Pull Bar. Mount the **TAILGATE LATCHES** to the outer top edge of the tailgate, both on the Driver's and Passenger's Side. These latches will hold the **PULL BAR** to the tailgate.

PRE-LOADING THE TARP SPOOL

Using a wrench rotate the **RATCHET ASSEMBLY (#5)** on the to pre-load the **SPRING RETURN ROLLER ASSEMBLY (#1)**. Use the chart below to determine the number of required preload turns:

Tarp Length	Number of Turns
10 – 14 ft.	35 turns
14 – 20 ft.	40 turns
20 – 26 ft.	45 turns
26 – 32 ft.	50 turns

DO NOT EXCEED 60 TURNS OF PRELOAD.

PULL ROPE AND STORAGE HOOK INSTALLATION

Tie the **PULL ROPE** in the center of the **PULL BAR**. bolt two **J HOOKS** to the tailgate to allow the entire length of the **PULL ROPE** to be stored when the load is covered. bolt two **J HOOKS** to the front driver's side of the truck to allow the entire length of the **PULL ROPE** to be stored when the load is uncovered.