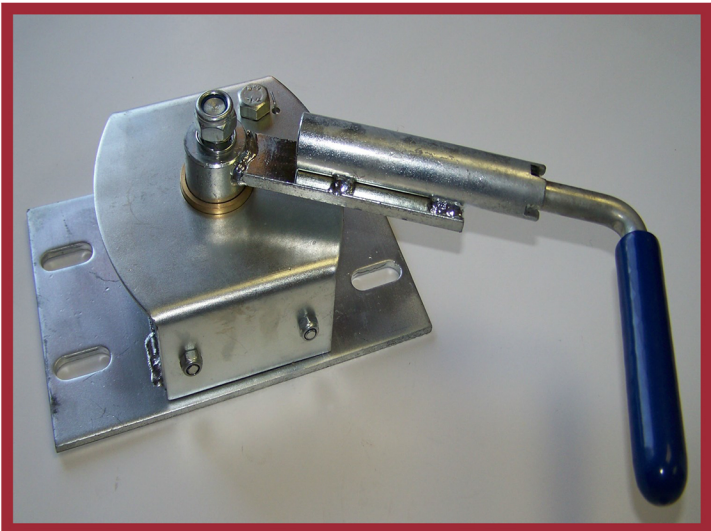
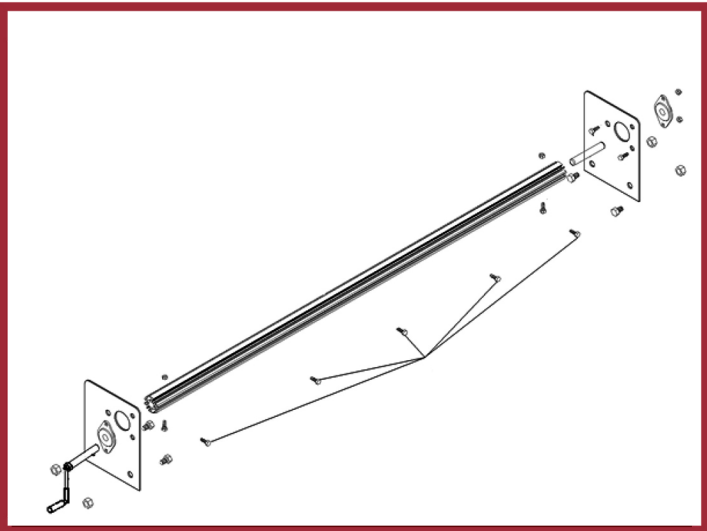
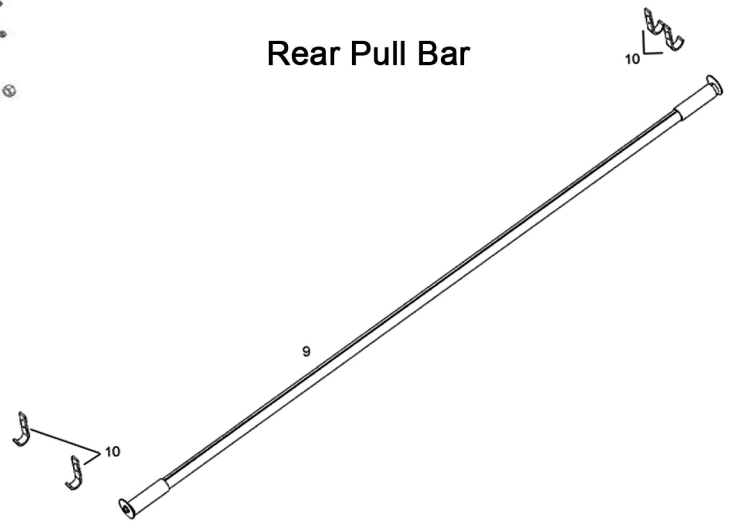
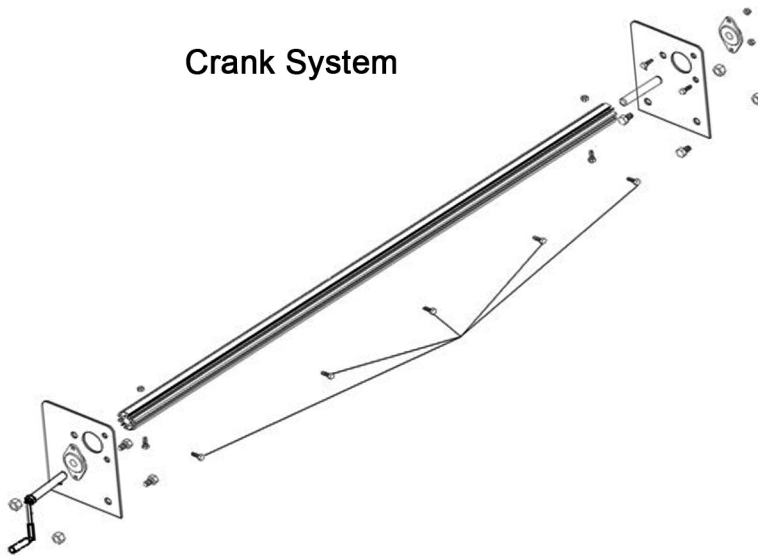


Installation Guide



Installation Guide
Cab Level Crank Style Tarp System

Cab Level Crank Style Tarp System Installation Instructions



- Can be used with tarps up to 40' long.
- Spring-loaded break away crank handle
- 1 1/2" diameter Aluminum extruded Tarp Axle
- Steel powder-coated mounting brackets and sealed

MOUNTING THE TARP SPOOL MOUNTING BRACKETS

- 1) **Mount** the two supplied TARP SPOOL MOUNTING BRACKETS on the exterior, and as far forward as possible, of the dump box. Drill the two mounting bracket holes 1-3/4" down from the top edge of the box.
- 2) **Use** the supplied 1/2" x 1" bolts & 1/2" nuts for attaching the Tarp Spool Mounting Bracket.
- 3) **Install** the AXLE BEARING WITH FLANGE to the outside of the TARP SPOOL MOUNTING BRACKET on both the driver's side and the passenger side of the truck. Use the supplied 5/16" x 7/8" bolts & 5/16" nuts for mounting.

Installing the Tarp Axle

- 1) **Measure** the distance between the two TARP SPOOL MOUNTING BRACKETS. Verify that the TARP AXLE is 1-inch shorter than this length. If the Tarp Axle is too long, cut it to the correct length then redrill a 5/16" hole 1/2" from the end.
- 2) **Slide** the two PLASTIC TARP AXLE CAPS into both ends of the TARP AXLE.
- 3) **Slide** the TARP AXLE into the ROTATABLE HANDLE SHAFT and secure with a 5/16" x 2-1/4" bolt & 5/16" nut.
- 4) **Slide** the SPOOL SHAFT into the other end of the Tarp Axle and secure with a 5/16" x 2-1/4" bolt & 5/16" nut.

Rear Pull Bar Installation

- 1) **Slide** splined side of tarp into extrusion on the pull bar
- 2) **Slide** PVC tube sections over each open side of pull bar.
- 3) **Attach** fender washer and bolt into extruded portion of pull bar.

System Includes

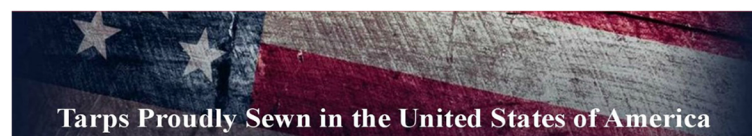
QTY	US Tarp Part #	Description
1	13967	Tarp Axle, Hollow 103", 1-1/2"
2	13943	1/2" Plastic Tarp Axle Cap
2	11366	Steel Tarp Spool Mounting Brackets
2	11139	Axle bearing with flange
1	11201	Spool Shaft 5" length
1	11265	Rotatable Handle on Shaft

Hardware Kit Includes

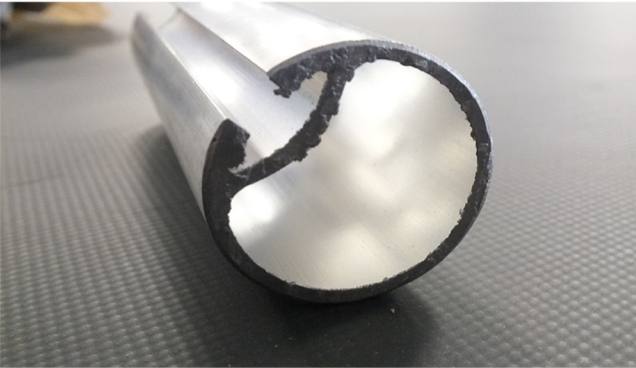
QTY	US Tarp Part #	Description
4	11270	1/2"-13x1" Grade 5 Bolt
4	11271	1/2" - 13 Grade 8 Nylock Nut
4	11207	5/16" - 18x2-1/4" Bolt
1	11202	5/16" - 18x2-1/4" Bolt
6	1129	5/16" Grade 8 Nylock Nut
5	14026	1/4"x1" Zinc Plated Fender Washer
5	11362	1/4" Nylock Nut
5	13922	1/4"-20x3/4" Zinc Plated Carriage Bolt

Tools Required

3/8" Drive Ratchet	1/4" Socket & Wrench
Electric Drill	5/16" Socket & Wrench
Radial Arm Saw	1/2" Socket & Wrench
Rubber Mallet	
Tape Measurer	



Cab Level Crank Style Tarp System Installation Instructions



Attaching the Tarp

Bring the free end of the tarp to the front of the truck bed and attach the Tarp to the tarp axle.

Tarps with Grommets:

Slide one $\frac{1}{4}$ -20 x $\frac{3}{4}$ " Zinc-Plated Carriage Bolt per grommet down the correct axle slot. Position the bolts to pass through each grommet and use a $\frac{1}{4}$ " x 1" Zinc Plated Fender Washer and a $\frac{1}{4}$ " Nylock Nut to tighten and fasten the tarp against the axle.