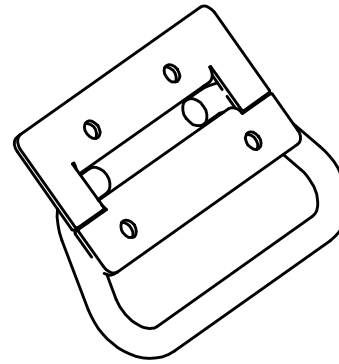
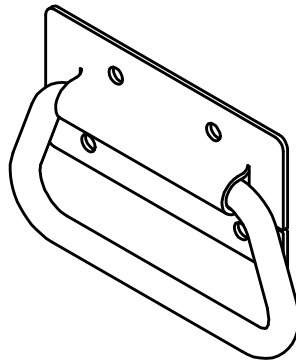


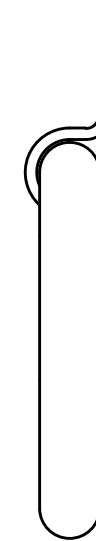
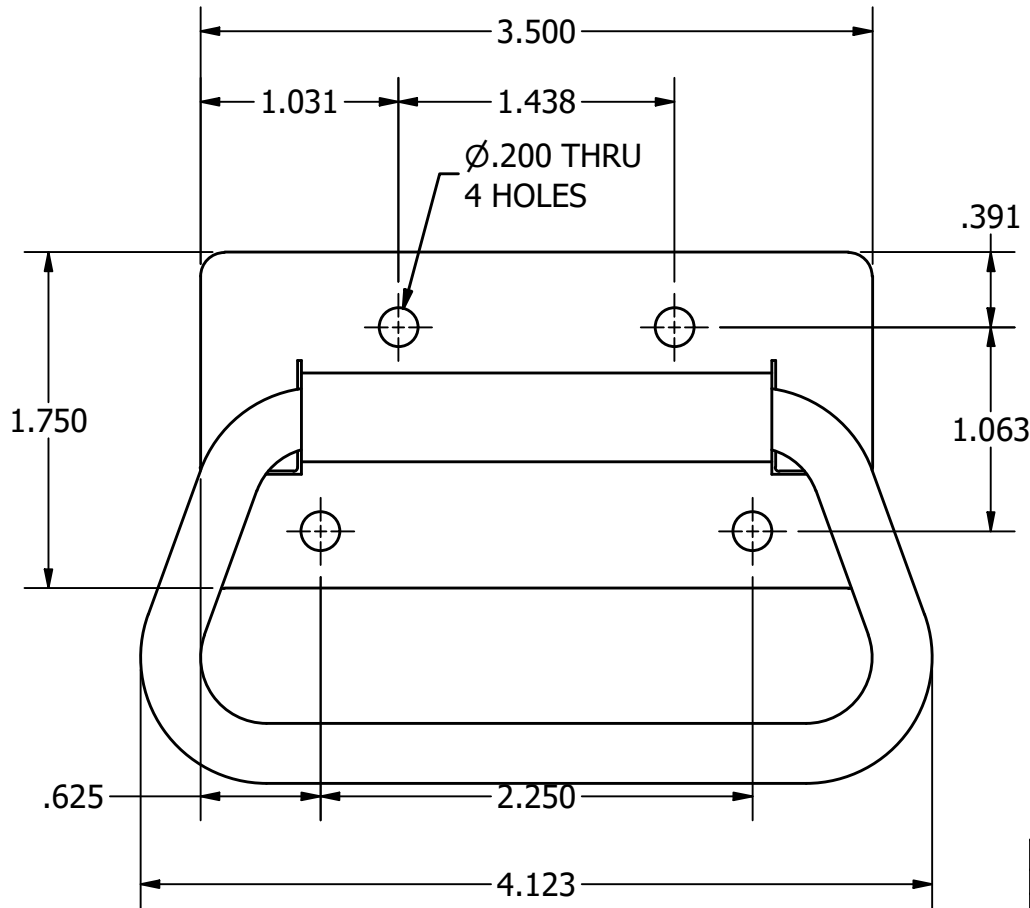
SIZE	DRAWING NO.	SHEET	REV
A	0201-710004	1 OF 3	B



NOTES:

- DO NOT SCALE DRAWING.
- REMOVE ALL BURRS AND SHARP EDGES.
- INDUSTRY STANDARDS AND PRACTICES MUST BE APPLIED IN FABRICATION OF PARTS.
- PART TO BE FREE FROM SURFACE IMPERFECTIONS OTHER THAN SURFACE FINISH REQUIREMENTS.
- CRITICAL DIMENSIONS ARE INDICATED BY: ●
- THIS DRAWING WAS ORIGINATED BY AND IS THE EXCLUSIVE PROPERTY OF AERO INDUSTRIES, INC. AND/OR ITS OWNER. IT IS NOT AN AUTHORIZATION OR LICENSE TO MAKE THIS CONSTRUCTION OR TO FURNISH THIS INFORMATION TO OTHER PARTIES.

NOTE: LABEL PART WITH PART NUMBER.



P:\INVENTOR 2012\0201\0201-710004.idw

TOLERANCES UNLESS OTHERWISE SPECIFIED	
DIMENSIONS IN INCHES	
x/x = ± 1/16	
.x = ± .031	
.xx = ± .020	
.xxx = ± .010	
.xxxx = ± .005	
ANGLE = ± 1/2°	
SURFACE = 125/√	
USED ON	

MATERIAL NOTE
STAINLESS STEEL
MATERIAL FINISH

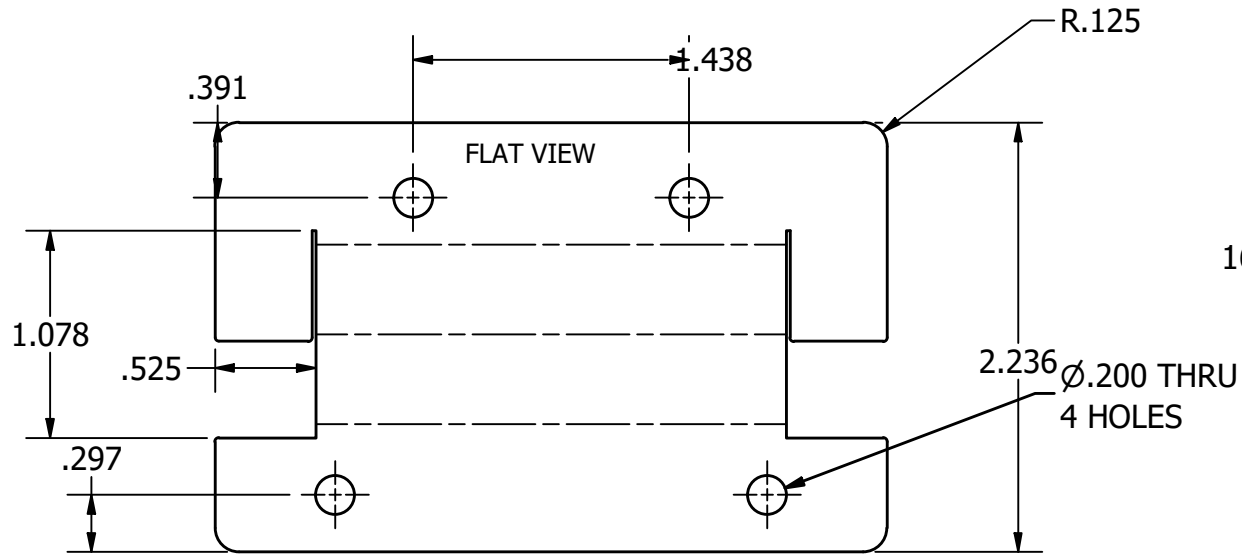
SCALE	DRAWN BY	APPROVED BY	DATE
1:1	RCM		2/1/2013
SIZE	DRAWING NO.	SHEET	REV
A	0201-710004	1 OF 3	B

B	DESCRIPTION	JLA	DATE
	ADDED NOTE ABOUT LABEL; ECO # 35364-13		7/10/20
REV	DESCRIPTION	BY	DATE
REVISIONS			

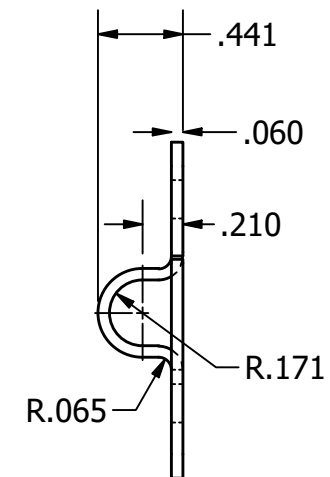
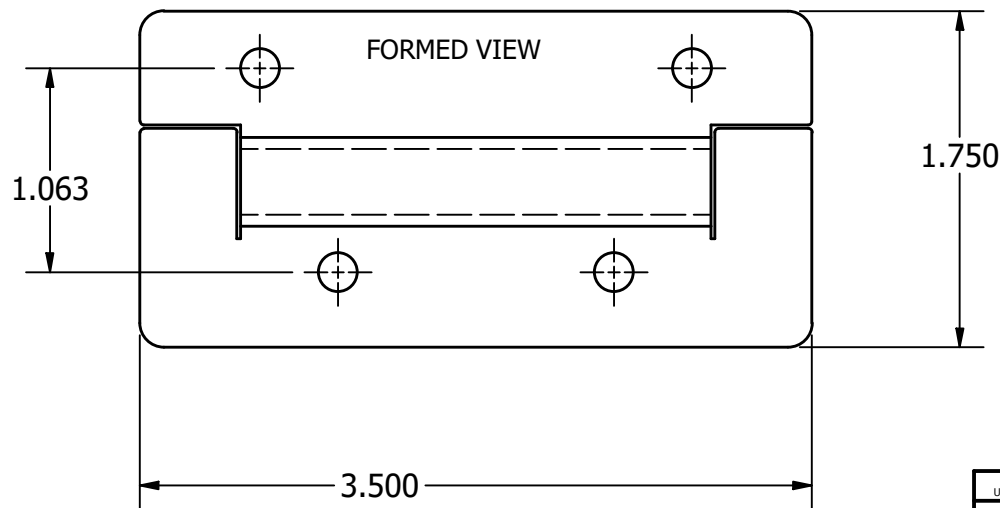
SIZE A	DRAWING NO. 0201-710004	SHEET 2 OF 3	REV B
-----------	----------------------------	-----------------------	----------

NOTES:

- DO NOT SCALE DRAWING.
- REMOVE ALL BURRS AND SHARP EDGES.
- INDUSTRY STANDARDS AND PRACTICES MUST BE APPLIED IN FABRICATION OF PARTS.
- PART TO BE FREE FROM SURFACE IMPERFECTIONS OTHER THAN SURFACE FINISH REQUIREMENTS.
- CRITICAL DIMENSIONS ARE INDICATED BY ●
- THIS DRAWING WAS ORIGINATED BY AND IS THE EXCLUSIVE PROPERTY OF AERO INDUSTRIES, INC. AND/OR ITS OWNER. IT IS NOT AN AUTHORIZATION OR LICENSE TO MAKE THIS CONSTRUCTION OR TO FURNISH THIS INFORMATION TO OTHER PARTIES.



16 GA 304 STAINLESS STEEL



P:\INVENTOR 2012\0201\0201-710004.idw

TOLERANCES UNLESS OTHERWISE SPECIFIED
DIMENSIONS IN INCHES
x/x = ± 1/16
.x = ± .031
.xx = ± .020
.xxx = ± .010
.xxxx = ± .005
ANGLE = ± 1/2°
SURFACE = 125/√

MATERIAL NOTE
**STAINLESS
STEEL**



TITLE
**HANDLE PLATE
CXP**

USED ON

MATERIAL FINISH

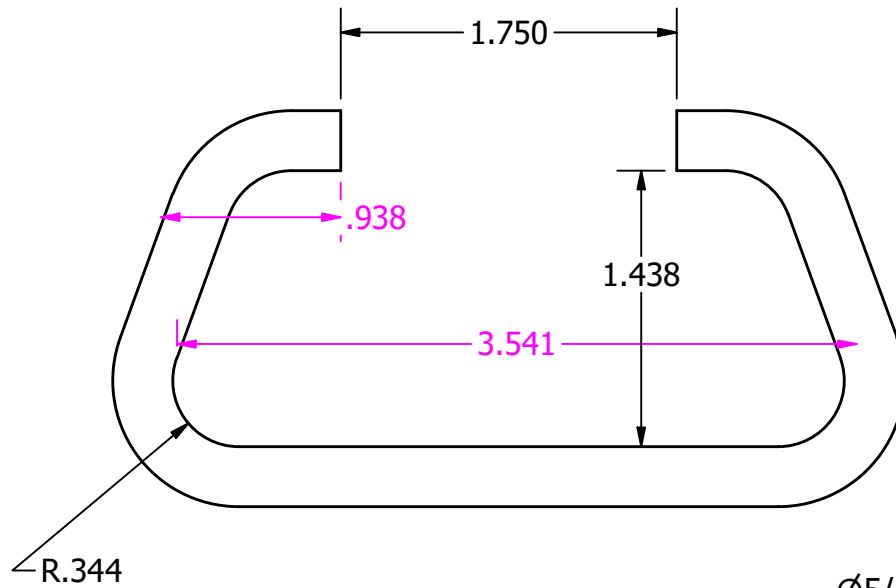
SCALE 1:1	DRAWN BY RCM	APPROVED BY	DATE 2/1/2013
SIZE A	DRAWING NO. 0201-710004	SHEET 2 OF 3	REV B

REV	DESCRIPTION	BY	DATE
REVISIONS			

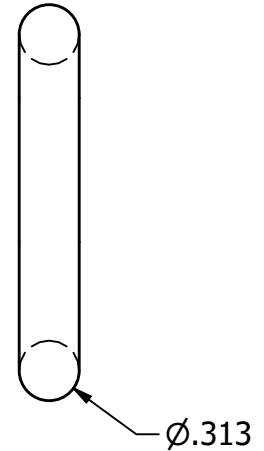
SIZE A	DRAWING NO. 0201-710004 GRAB	SHEET 3 OF 3	REV B
-----------	------------------------------------	-----------------------	----------

NOTES:

1. DO NOT SCALE DRAWING.
2. REMOVE ALL BURRS AND SHARP EDGES.
3. INDUSTRY STANDARDS AND PRACTICES MUST BE APPLIED IN FABRICATION OF PARTS.
4. PART TO BE FREE FROM SURFACE IMPERFECTIONS OTHER THAN SURFACE FINISH REQUIREMENTS.
5. CRITICAL DIMENSIONS ARE INDICATED BY: ●
6. THIS DRAWING WAS ORIGINATED BY AND IS THE EXCLUSIVE PROPERTY OF AERO INDUSTRIES, INC. AND/OR ITS OWNER. IT IS NOT AN AUTHORIZATION OR LICENSE TO MAKE THIS CONSTRUCTION OR TO FURNISH THIS INFORMATION TO OTHER PARTIES.



Ø5/16 316 STAINLESS STEEL



P:\INVENTOR 2012\0201\0201-710004.idw

TOLERANCES UNLESS OTHERWISE SPECIFIED		MATERIAL NOTE	
DIMENSIONS IN INCHES		STAINLESS STEEL	
x/x = ± 1/16 .x = ± .031 .xx = ± .020 .xxx = ± .010 .xxxx = ± .005 ANGLE = ± 1/2° SURFACE = 125√			
USED ON		MATERIAL FINISH	

TITLE			
SCALE 1:1	DRAWN BY RCM	APPROVED BY	DATE 2/1/2013
SIZE A	DRAWING NO. 0201-710004	SHEET 3 OF 3	REV B

REV	DESCRIPTION	BY	DATE
REVISIONS			

GRAB